

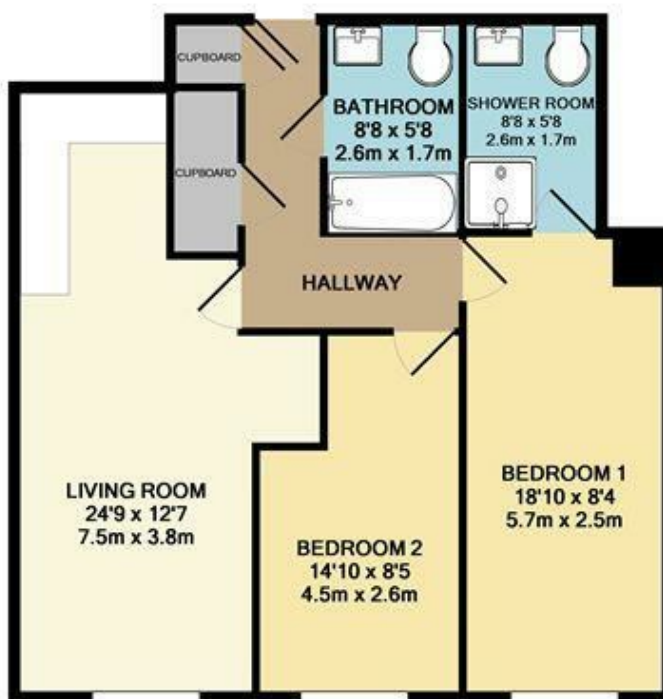


48 WORSLEY MILL 10 BLANTYRE STREET CITY CENTRE, M15 4LG

£1,300 PCM

Spacious second floor apartment in converted Victorian Flour Mill located in desirable Castlefield area. large open plan living area with many original features retained such as exposed brickwork, beams and timber ceilings. Two double bedrooms, two bathrooms and a secure parking space. Available 3rd February 2026.

buckleyfrayne



TOTAL APPROX. FLOOR AREA 685 SQ.FT. (63.6 SQ.M.)

Whilst every attempt has been made to ensure the accuracy of the floor plan contained here, measurements of doors, windows, rooms and any other items are approximate and no responsibility is taken for any error, omission, or mis-statement. This plan is for illustrative purposes only and should be used as such by any prospective purchaser. The services, systems and appliances shown have not been tested and no guarantee as to their operability or efficiency can be given.
Made with Metropix ©2011



Energy Efficiency Rating		
	Current	Potential
Very energy efficient - lower running costs		
(92 plus) A		
(81-91) B		
(69-80) C		70
(55-68) D		
(39-54) E	43	
(21-38) F		
(1-20) G		
Not energy efficient - higher running costs		
England & Wales	EU Directive 2002/91/EC	

Agents Note: Whilst every care has been taken to prepare these particulars, they are for guidance purposes only. All measurements are approximate and are for general guidance purposes only and whilst every care has been taken to ensure their accuracy, they should not be relied upon and potential buyers/tenants are advised to recheck the measurements

Manchester Office Lettings
6-14 Great Ancoats Street
Northern Quarter
Manchester
M4 5AZ

0161 236 0004
mark.buckley@buckleyfrayne.co.uk
www.buckleyfrayne.co.uk

buckleyfrayne